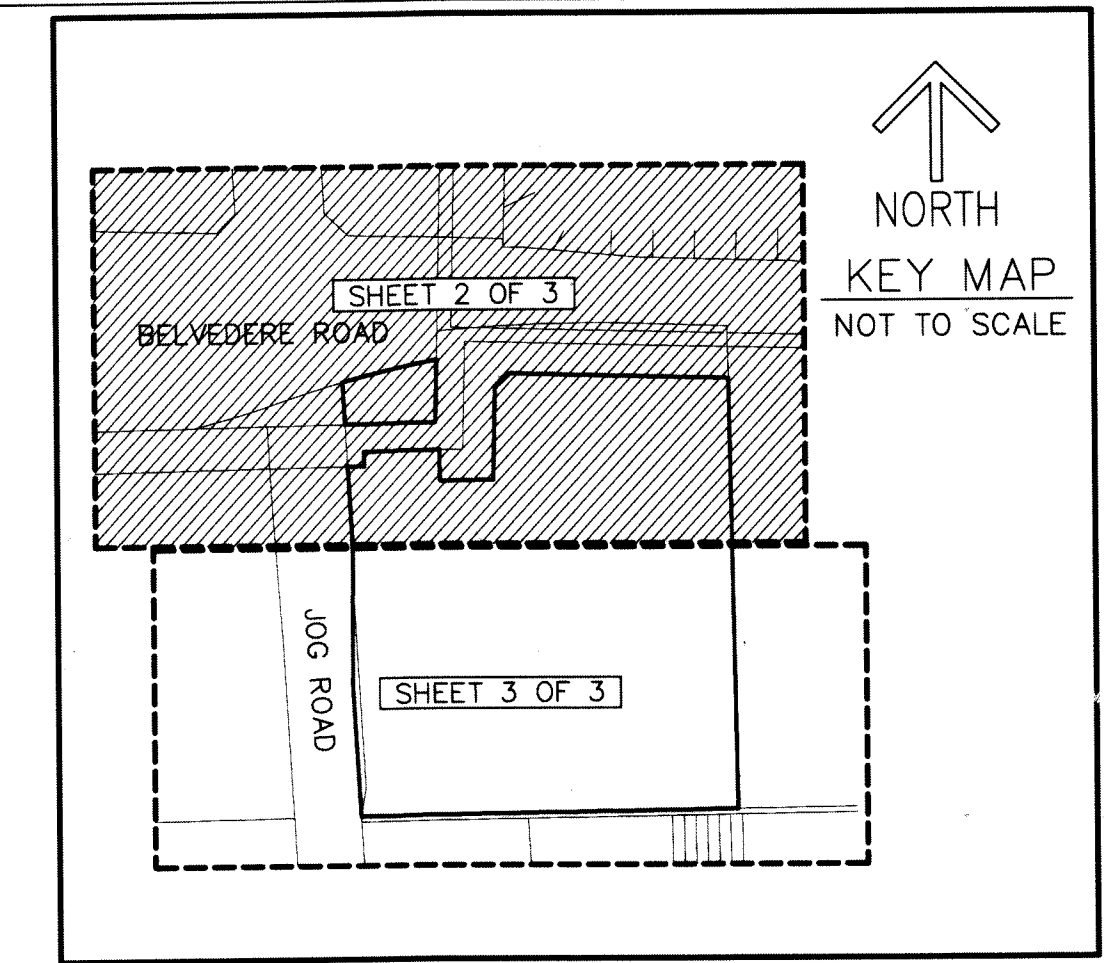


# LIFECHURCH.TV

BEING A REPLAT OF A PORTION OF TRACT 20, BLOCK 4, TOGETHER WITH A PORTION OF TRACTS 4 AND 5, BLOCK 5, ALL OF PALM BEACH FARMS COMPANY PLAT NO. 3, AS RECORDED IN PLAT BOOK 2, PAGES 45 THROUGH 54, OF THE PUBLIC RECORDS OF PALM BEACH COUNTY, FLORIDA, LYING IN SECTION 34, TOWNSHIP 43 SOUTH, RANGE 42 EAST, PALM BEACH COUNTY, FLORIDA

THIS INSTRUMENT PREPARED BY  
DAVID P. LINDLEY  
OF  
**CAULFIELD and WHEELER, INC.**  
SURVEYORS - ENGINEERS - PLANNERS  
7900 GLADES ROAD, SUITE 100  
BOCA RATON, FLORIDA 33434 - (561)392-1991  
CERTIFICATE OF AUTHORIZATION NO. LB3591



# 173

STATE OF FLORIDA  
COUNTY OF PALM BEACH  
THIS PLAT WAS FILED FOR  
RECORD AT \_\_\_\_\_ M.  
THIS \_\_\_\_\_ DAY OF \_\_\_\_\_  
A.D. 20\_\_\_\_ AND DULY RECORDED  
IN PLAT BOOK \_\_\_\_\_ ON  
PAGES \_\_\_\_\_ AND \_\_\_\_\_

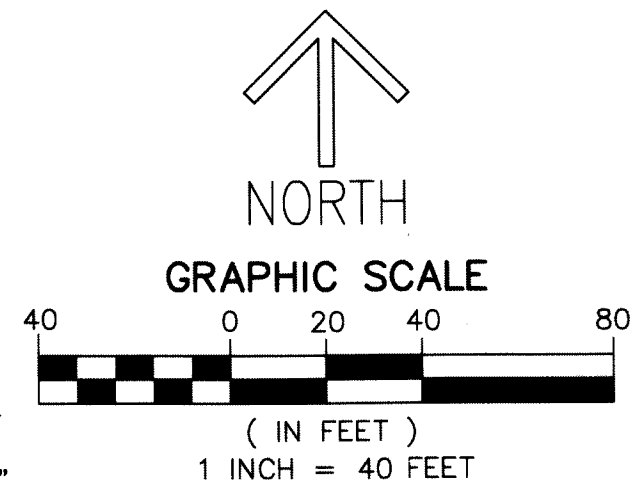
SHARON R. BOCK  
CLERK AND COMPTROLLER

BY: \_\_\_\_\_  
DEPUTY CLERK

**SHEET 2 OF 3**

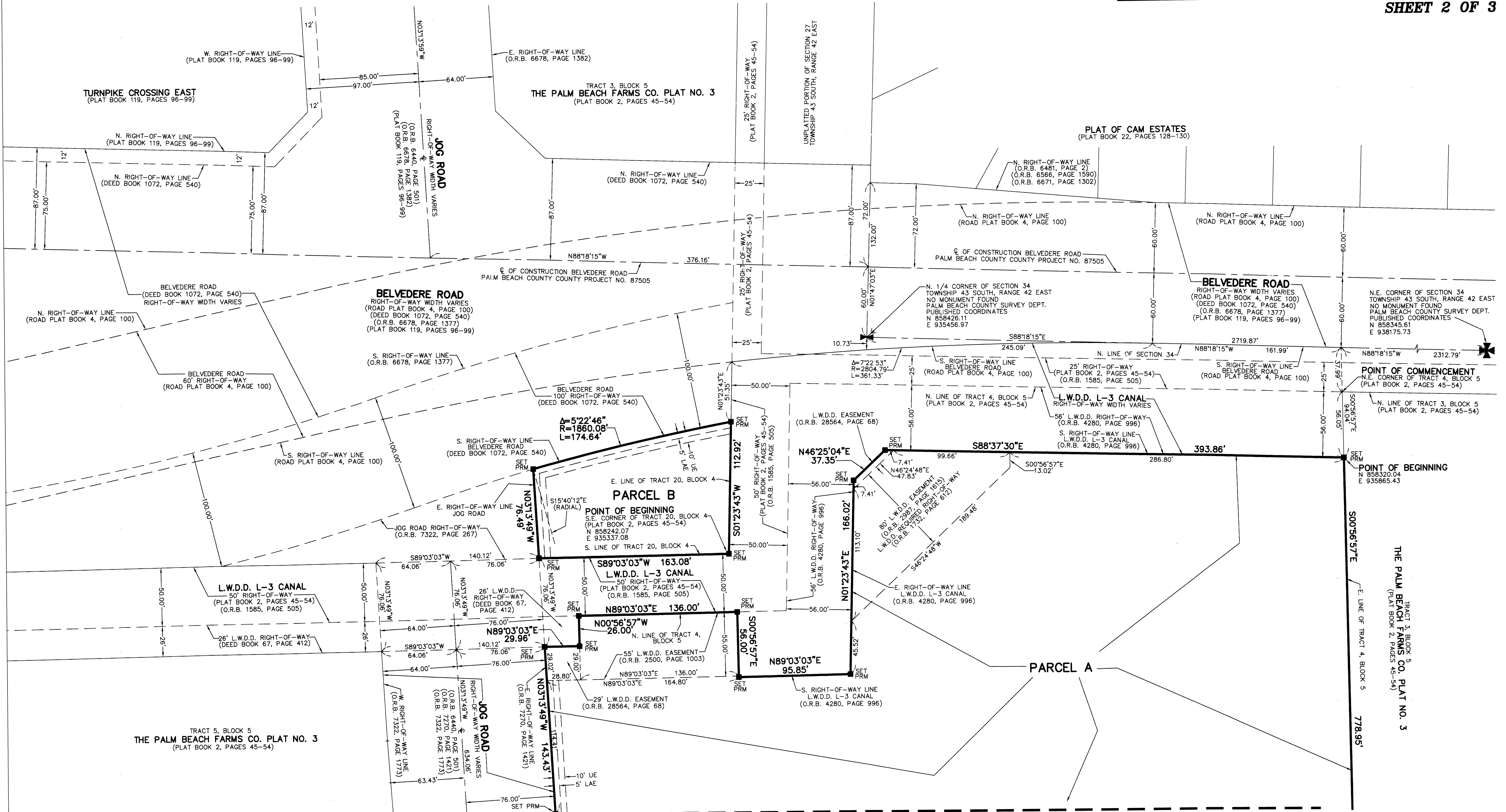
### LEGEND/ABBREVIATIONS

- ⊕ - CENTERLINE
- Δ - DELTA (CENTRAL ANGLE)
- E - EASTING
- L - ARC LENGTH
- LAE - LIMITED ACCESS EASEMENT
- LB - LICENSED BUSINESS
- L.W.D.D. - LAKE WORTH DRAINAGE DISTRICT
- N - NORTHING
- O.R.B. - OFFICIAL RECORD BOOK
- R - RADIUS
- UE - UTILITY EASEMENT
- PRM - DENOTES PERMANENT REFERENCE MONUMENT  
4" x 4" x 24" CONCRETE MONUMENT WITH  
ALUMINUM DISK STAMPED "C&W PRM LB3591"



### NOTES

- COORDINATES, BEARINGS AND DISTANCES
- COORDINATES SHOWN ARE GRID
- DATUM = NAD 83 (90/98 ADJUSTMENT)
- ZONE = FLORIDA EAST
- LINEAR UNIT = US SURVEY FEET
- COORDINATE SYSTEM 1983 STATE PLANE
- TRANSVERSE MERCATOR PROJECTION
- ALL DISTANCES ARE GROUND
- SCALE FACTOR = 1.0000306
- GROUND DISTANCE X SCALE FACTOR = GRID DISTANCE
- BEARINGS AS SHOWN HEREON ARE GRID DATUM,  
NAD 83 (90/98 ADJUSTMENT), FLORIDA EAST ZONE.



MATCH LINE SHEET 3 OF 3

TRACT 3, BLOCK 5,  
THE PALM BEACH FARMS CO. PLAT NO. 3  
(PLAT BOOK 2, PAGES 45-54)